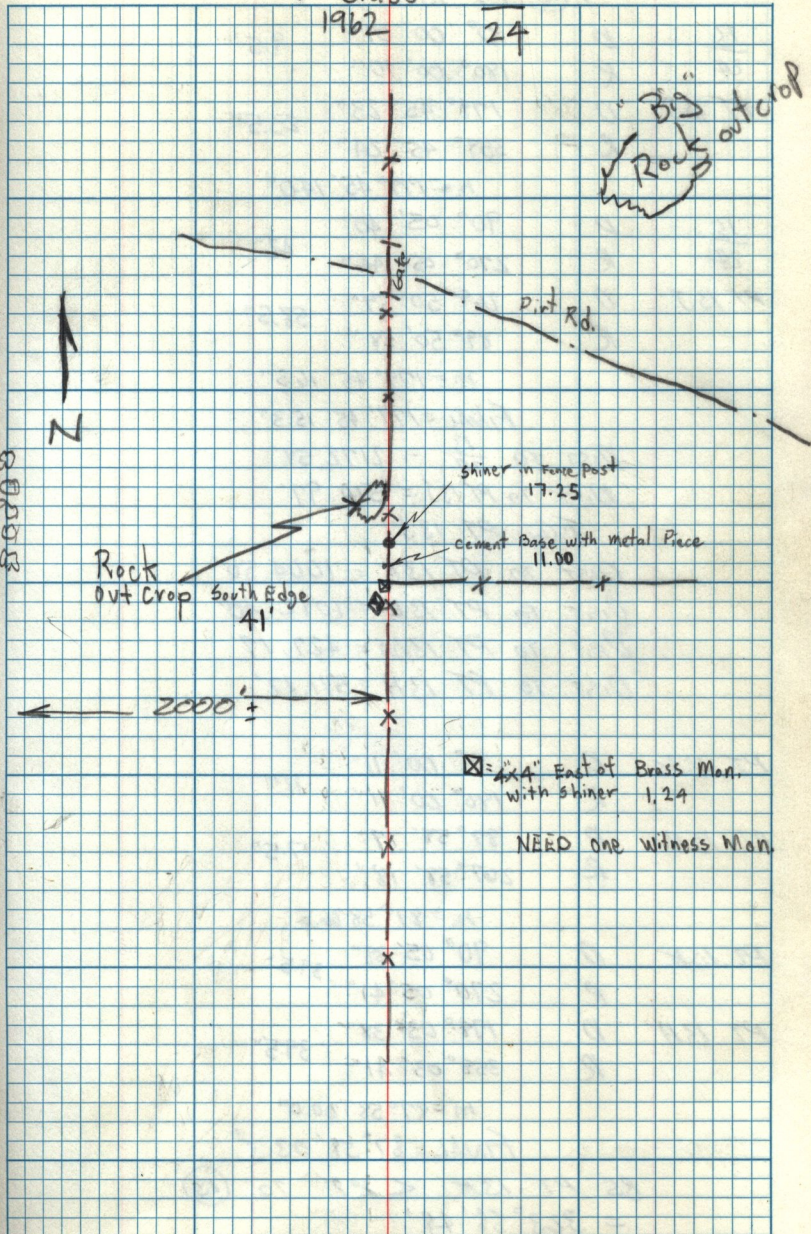


3" Brass
1962

13
24

D.B. R.B. B.A.

30



Rock
Out Crop South Edge
41'

Shiner in Fence Post
17.25

Cement Base with metal Piece
11.00

⊠ = 4" x 4" East of Brass Mon.
with shiner 1, 24

NEED one Witness Man.

2000' ±

N
↑

Big
Rock Outcrop